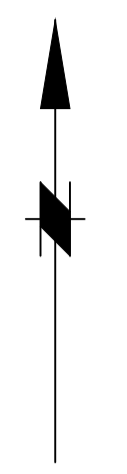
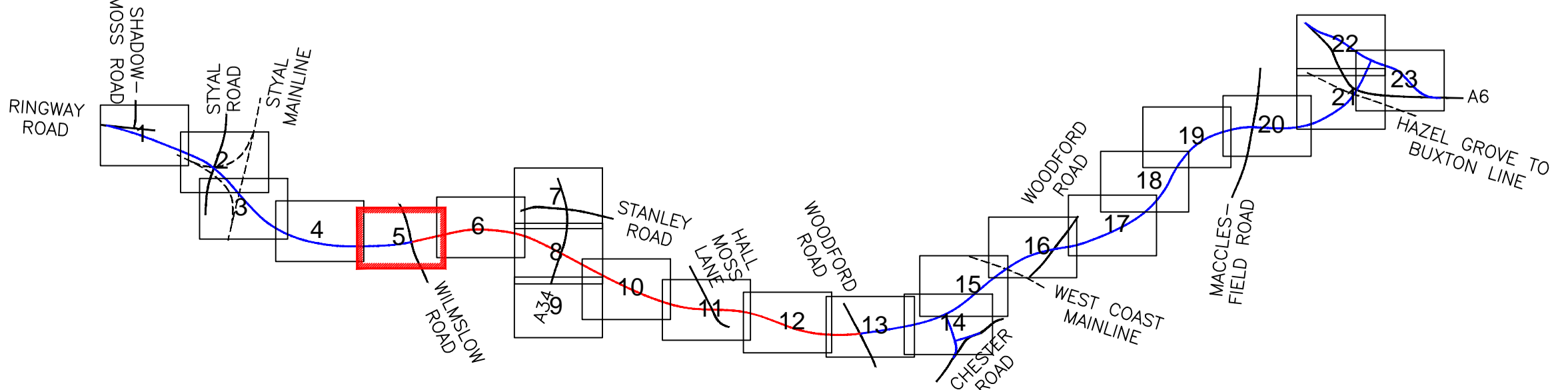
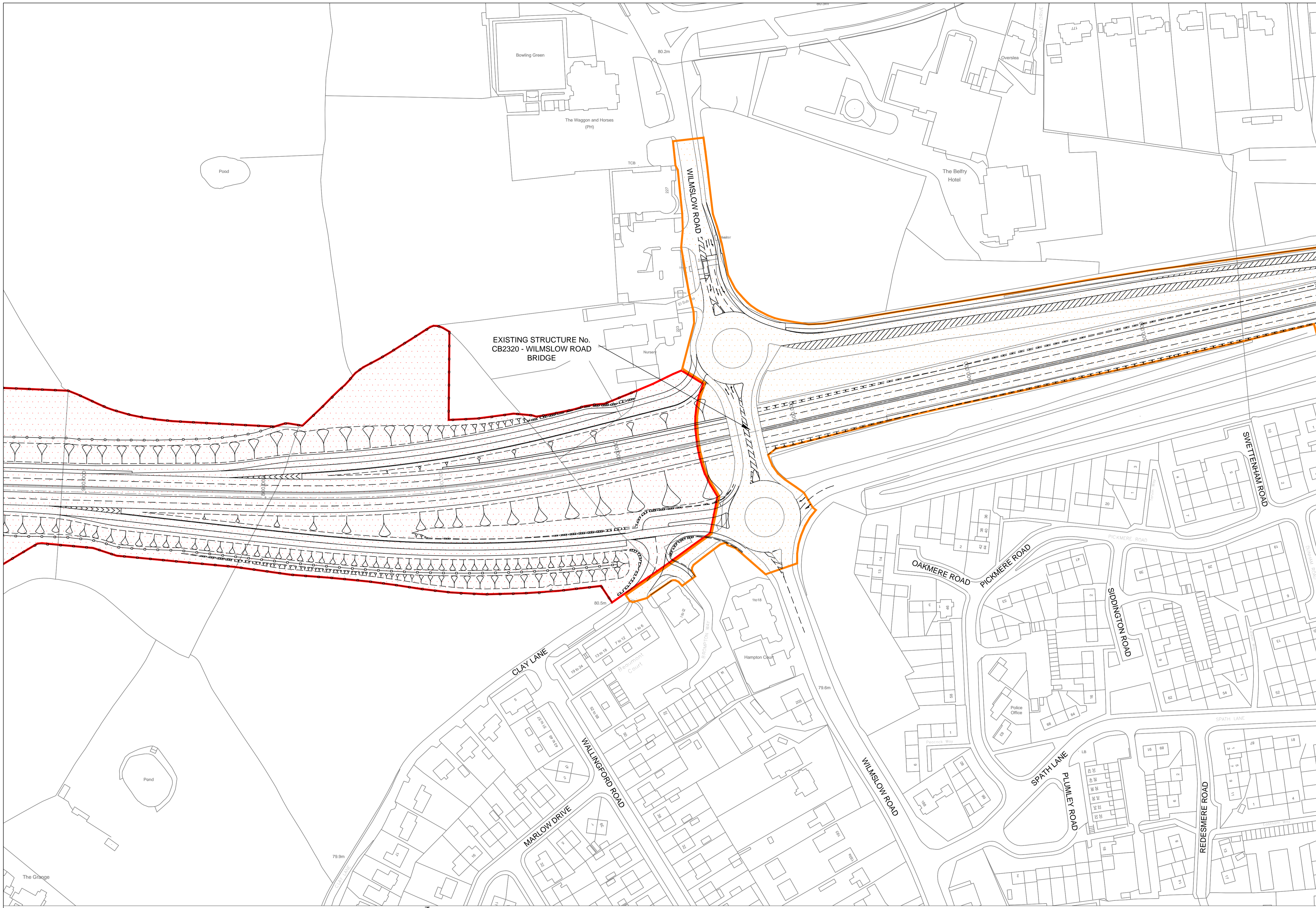


This map is reproduced from Ordnance Survey material with the permission of Ordnance Survey on behalf of the Controller of Her Majesty's Stationery Office. © Crown copyright. Unauthorised reproduction infringes Crown copyright and may lead to prosecution or civil proceedings. Stockport Metropolitan Borough Council 100019571 2012



- LAND REQUIRED FOR THE SCHEME (PERMANENT)
- LAND REQUIRED FOR THE SCHEME (TEMPORARY) MATERIAL STORAGE/COMPOUNDS/WORKING SPACE ETC
- LAND REQUIRED FOR THE SCHEME (EASEMENT)
- EXISTING LOCAL AUTHORITY LAND REQUIRED FOR THE SCHEME



Rev.	Drawn	Checked	Date	Revision Details

www.semmms.info

Jfm McMahon BSc, C.Eng, MCE
SERVICE DIRECTOR, MAJOR PROJECTS

STOCKPORT HOUSE
STOCKPORT S20 3YE
TEL : 0161 474 4351
FAX : 0161 474 4633

Job Title
A6 - MANCHESTER AIRPORT RELIEF ROAD

Drawing Title
PLANNING APPLICATION BLOCK PLANS EXISTING SHEET 5

Drawn SEB/DP	Engineer SP	Checked NH	Approved AB
Date 03.10.13	Date 03.10.13	Date 03.10.13	Date 03.10.13
Size A1	Scale 1:1000		
SCG No.	Filename		
Drawing No. 1007/3D/DF7/A6-MA/PABP/E/005	Revision		